



PHILADELPHIA SKYLINE



CROSSING VINEYARDS AND WINERY



GALLERY IN KENNETT SQUARE



LIVE MUSIC AT JOHNNY BRENDA'S



FOUNTAIN SHOW AT LONGWOOD GARDENS

Before you see Philly, you can hear it.

Get the most up-to-the-minute dish on what's hot and what's happening with Hear Philly, a new daily online radio show. Log onto hearphilly.com and get the daily scoop on events, attractions, shopping, restaurants and everything else you need to make the most of your visit.

TOWNS AND MAIN STREETS

of PHILADELPHIA AND THE COUNTRYSIDE®

BIG CITY – Small Towns

Decisions, decisions. You love the vitality of a big city, but you can't resist the delights of a small town. So how do you choose?

The good news is when you visit Philadelphia and The Countryside® you don't have to. You get all the excitement of Philadelphia's big city pizzazz and the small town charm of the countryside's suburban communities.

Sure, the city's cobblestone streets are chockfull of historic landmarks, but important stories from America's past are waiting for you throughout the countryside too. You'll find sweeping gardens dotting rural roads and technicolor gardens tucked away in neighborhood courtyards. And of course, hip boutiques, trendy galleries and hotspots on the music map are part of life in the big city, but style mavens and culture aficionados—you know who you are—will be delighted at the one-of-a-kind finds at shops and art houses, as well as the local and national talent performing

at entertainment venues, throughout the region.

The best part? It's all just a gallon or two of gas away. And with plenty of affordable hotel packages on gophila.com, you can spend a night...or two...or even three in Philadelphia and The Countryside®. A fan favorite, the two-night **Philly Overnight® Hotel Package** comes with free hotel parking and a free gift at check-in. Log onto gophila.com, pick your hotel package and gear up for big adventures on a small budget.



GREAT GRAPES & BIG BREWS

The region's brewers and vintners continue Philadelphia's centuries-old tradition as a great brewing capital. Area wineries have joined forces to establish two wine trails in Philadelphia's countryside: The **Brandywine Valley Wine Trail** bridges eight Chester County wineries, and the **Bucks County Wine Trail** unites eight wineries just north of Philadelphia. Spend an afternoon or even a full weekend sipping your way along the trails. If a sudsy brew is more your taste, you can tour breweries and sample their delicious stock. So raise a frosted mug or clink a long-stemmed flute in a toast to the region's breweries, gastropubs and wineries.

VINO FINO

- ▶ There's no way to list all the medals the **Chaddsford Winery** has racked up for their wines, so you'll just have to drop by their tasting room along the Brandywine Valley Wine Trail and sample them for yourself.
- ▶ If you are an oenophile, the four doctors who launched **Paradocx Vineyard** on the Brandywine Valley Wine Trail have the prescription—a glass or two of their fine wines.
- ▶ **VaLa Vineyards** combines works by local artists with their own art of winemaking in a charming tasting room that overlooks the vineyards.
- ▶ The atmosphere at **Buckingham Valley Vineyards** on the Bucks County Wine Trail is casual—you pour your own samples—but the wines they produce will please even the most sophisticated palates.
- ▶ Sip on the vintages produced at **Rose Bank Winery** on the Bucks County Wine Trail, and enjoy the sweeping views of the Newtown-based vineyards, pastures and centuries-old manor house and stone barn.

GOING WITH THE GRAIN

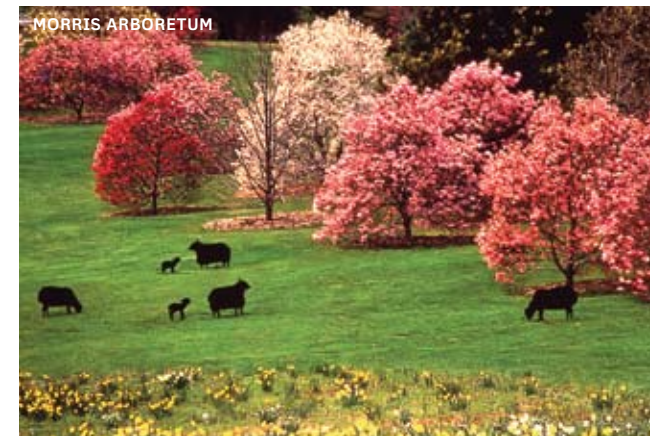
- ▶ Try before you buy. When you take a free tour of the **Philadelphia Brewing Co.**, you'll get to sip samples of the brewery's hearty beers and ales.
- ▶ With their knack for creating hearty bock and ice bock brews, you'll taste why **Sly Fox Brewery**, with locations in Phoenixville and Royersford, won gold medals at the *Great American Beer Festival*.

- ▶ Drop by **Victory Brewing Company** on the weekend for a behind-the-scenes brewery tour, or order up one of the 20 hand-crafted beers served at their full-service restaurant in Downingtown.
- ▶ There's a new look, a new location and a new tour in store for you at Philadelphia's **Yards Brewing Company**, but they still produce the same hearty, flavorful brews that earned raves from *The New York Times*.

GARDENS GREAT & SMALL

What's green—and fuchsia and blue and yellow and red and violet—all over? Philadelphia. William Penn's "greene countrie town" and the surrounding countryside are awash in colorful blooms. Together they add up to a visual delight for garden lovers.

- ▶ In Wayne, **Chanticleer's** 35 acres are like a party for your senses with thousands of blooms, scents and sculptures scattered throughout the Asian Woods, Fairy Tale Garden or any of the 11 garden environments.
- ▶ Proving that sometimes biggest really is best, Philadelphia's **Fairmount Park**, the nation's largest municipal park system, offers 9,000 acres of sweeping meadows, trails lined with wildflowers and thickets of towering trees.



- ▶ Keep your camera handy when you visit **Longwood Gardens** in Kennett Square. With indoor and outdoor brightly colored blooms, swirling fountains and the giggle-inducing Children's Garden, you'll want to remember all 1,500 acres of eye-popping opulence.
- ▶ Look up to spot the new Canopy Walk soaring 40 feet above the ground at **Morris Arboretum** in Philadelphia. The Victorian-inspired garden features unusual species of trees and flowers, a swan pond and a Garden Railway that shrinks Philadelphia landmarks to miniature size.
- ▶ Take just one whiff of the acres of lavender at Bucks County's **Carousel Farm** to feel calm and serene in no time.
- ▶ After you solve the riddle of the Meadow Maze labyrinth, treat your senses to a walk past the 80-foot tulip trees and the Native Woodland Walk at Media's **Tyler Arboretum**.



TINY TREASURES & BIG STYLE

When you want to shop big, you'll love the high-style shops at **King of Prussia Mall**, the shopping capital of the East Coast, or the great savings that await you at nearby **Philadelphia Premium Outlets** in Limerick, a mecca for bargain hunters. But sometimes only pocket-sized boutiques will do. Throughout Philadelphia and The Countryside® you'll find dozens of quaint Main Street shops that specialize in personalized service and out-of-the-ordinary finds. And with no tax on clothing or shoes, you can fill your wardrobe without maxing out your credit card.

- ▶ Sip a cup of tea by the cozy fireplace as you ponder purchasing antiques, decorative items, architectural elements and furniture at the **Brick Garage** in Kennett Square.
- ▶ Treat your tootsies to imported footwear by the hippest new European designers at **Bus Stop** in Philadelphia.
- ▶ Whether you want handmade fairy wings or handmade pottery, textiles, instruments or other rare objects, you can find it at Media's **Earth & State**, a fair-trade boutique featuring more than 200 artists from around the globe.
- ▶ One nibble of **Éclat Chocolate's** specialty international chocolates and you'll taste why top magazines like *Vogue* and *Food & Wine* rave about the West Chester chocolatier's toothsome treats.
- ▶ You'll find all kinds of custom and one-of-a-kind jewelry treats hidden in clocks, dangling from trees or displayed on tabernacles at **Halloween** in Center City.
- ▶ If it's on the runway, you'll find it at **Joan Shepp**, a Center City gallery of fashions featuring trendsetting designs by the top names of the international style world.
- ▶ **Love Saves the Day** vintage clothing store in New Hope is so popular that the owners charge 20 cents to enter on weekends. Once inside, you'll go crazy for sunglasses, collectible Pez dispensers and clothes dating back to the 1850s.
- ▶ You and your home can get a style makeover at Ambler's **Mojave Moon**, where you can find handmade accessories, home accents, jewelry and linens.
- ▶ Your miniature fashionistas will be the hippest kids in school when they show up in cool threads from **Monkey Business** in Doylestown.
- ▶ **Rosemont Pharmacy** has your style prescription with Maggie B. handbags, Silly Sandals, jewelry, baby bags and other chic accessories.

gophila.com

Official Visitor Site of
Philadelphia
and The Countryside®



► **ITINERARIES**

gophila.com/itineraries

Use our pre-made itineraries or “My Trip” to customize your visit.



► **INTERACTIVE MAPS**

gophila.com/maps

Find information on hotels, museums, restaurants and shops by clicking the icons.



► **DAILY UPDATES**

gophila.com/uwishunu

Experience Philly Like a Local® with the inside scoop on eating, drinking, shopping and more.



Plan your next business function at philadelphiausa.travel or your next leisure trip at gophila.com

READER RESPONSE 8

BUILDING ON AMERICA'S PAST

Walls do talk. Listen closely as you stroll through the region's historic buildings, and those walls will tell you all about the Quaker farmers who settled in the countryside, the rabble-rousers who defied a tyrannical king, the brave abolitionists who offered the enslaved a chance of freedom and others whose achievements built the American legacy.

- Settle in at one of the storytelling benches to hear tales of America's past, or wander along Philadelphia's cobblestone streets to discover centuries of history throughout **Independence National Historical Park**.
- Whether you hike, bike or drive through **Valley Forge National Historical Park**, you'll be inspired by the tales of General Washington and his brave troops during the bitter winter of 1777-78.
- The **Brandywine Battlefield Historic Site** brings to life the largest engagement of the Revolutionary War, fought on September 11, 1777 between the Continental Army led by General George Washington and the British forces headed by General William Howe.
- Explore the recently renovated **Edgar Allan Poe National Historical Site**, the literary icon's one-time Philadelphia home where he wrote *Murders in the Rue Morgue* and other classics.
- Bring your tissues. You just might need them when you hear the stories of lost loves and treasonous alliances that occurred at **Graeme Park**, the 1772 Horsham home of the Royal Provincial Governor of Pennsylvania.
- Don't let the peaceful surroundings and 18th-century elegance of **Historic Waynesborough** in Paoli fool you. The home of General “Mad Anthony” Wayne was at the center of a brutal Revolutionary War battle.
- Once inside the Germantown home of the Quaker family who hid enslaved Africans in the attic of the **Johnson House Historic Site**, you can feel the dangers risked by those traveling the Underground Railroad.
- Step into **Pennsbury Manor** and the costumed re-enactors who demonstrate centuries-old crafts, cooking and farming activities on William Penn's reconstructed 43-acre Morrisville farmstead will whisk you back into the 17th century.
- When you step inside the **Paul Robeson House** in West Philadelphia you might wonder how such a small house could contain the many talents of the legendary actor, singer, athlete, scholar and social activist.



STORYTELLING BENCH AT FRANKLIN SQUARE



BRANDYWINE RIVER MUSEUM

A BIG CANVAS FOR GREAT ART

Maybe it is the city's stunning landscape or the countryside's picturesque scenery—or a little bit of both. Whatever the reason, Philadelphia and The Countryside® has been the muse for generations of artists. From the grand temples that display traditional masterpieces to intimate galleries where art is a daring experiment to everything in between, you get an eyeful of beauty everywhere you look.

- Walls can't hold all the art you'll discover at **Abington Art Center**. In addition to the galleries that feature works by regional artists, the outdoor Sculpture Garden with creations by international artists is a visual feast.
- Take a stroll around the leafy grounds of the **Brandywine River Museum**, and then spring for the side trip to the **Kuerner Farm** for a peek into the private farm that appears in more than 1,000 of Andrew Wyeth's paintings.
- Slip into comfy shoes and spend **First Friday** poking around dozens of Old City Philadelphia galleries that open their doors for late-night gallery hopping.
- Name an architectural style, and you can probably find it at **Fonthill**, Henry Mercer's fanciful concrete castle in Doylestown that's a maze of storybook turrets, 32 staircases and 44 rooms, each adorned with antique and hand-crafted tiles from around the world.
- Sometimes the old ways are the best ways. Just ask the ceramic artists at Doylestown's **Moravian Pottery and Tile Works** who create stunning tiles using traditional Arts and Crafts movement techniques.
- You can enjoy the paintings, photography and sculpture in the galleries at the **James A. Michener Art Museum** in Doylestown, but the classes and workshops let you hone your own talents.
- Watch dedicated artisans crafting bowls, trays and other giftware in aluminum, bronze and pewter at Exton's **Wendell August Forge**, the oldest and largest forge of its kind in the nation.
- If your taste runs to outsider art, craft art and found art, **Sweet Mabel Folk Art and Fine Craft Gallery** in Narberth has just what you're looking for.
- The sprawling Victorian mansion that houses **Woodmere Art Museum** is a work of art in itself, but don't stop there. Step inside the Chestnut Hill landmark and peruse its nine galleries featuring classical, contemporary and rule-breaking artists.

Seize the Moment!



History



Museums



Gardens



Outdoor Fun



Entertainment

DELAWARE COUNTY'S
BRANDYWINE COUNTRY

READER RESPONSE 9

Brandywine Conference and Visitors Bureau
One Beaver Valley Road, Chadds Ford, PA 18317
Phone: 610-565-2679 or 800-343-3983
Fax: 610-565-0833

www.brandywinecountry.org



Towns & Main Streets
of the Brandywine Valley
Kennett Square • West Chester • Phoenixville
BrandywineValley.com



Kennett Square
Quaint downtown streets, unique galleries, gift boutiques and fine restaurants. Minutes from Longwood Gardens
www.historickennettsquare.com



West Chester
Small-town charm with cosmopolitan flair. A vast selection of restaurants and shops make this an essential part of any vacation.
www.downtownwestchester.com



Phoenixville
Vibrant downtown restaurants, theatre, galleries and unique retail near Valley Forge Historical Park.
www.mainstreetphoenixville.org



MILKBOY COFFEE



COUNTY THEATER

TUNE IN TO BIG TALENT

Listen closely. That sound you hear is the sound of the hipster rock, finger-snapping jazz, heart-pounding classical and other genres that have put Philadelphia and The Countryside® on the world's musical map. And while there's loads of talent in the city's majestic concert halls, you can tune in to all kinds of grooves on intimate stages and in tiny clubs around the city and suburbs.

- ▶ When the region's top local bands step up to the mic at **Chambers 19 Bistro & Bar** in Doylestown, you'll want the party to last all weekend long.
- ▶ The name has changed, but you'll rock out to the line-up at the **Fillmore at TLA**, which features a mix of ready-to-break-out, esoteric and alternative artists.
- ▶ There's cool, there's cooler and then there's **Johnny Brenda's**, a hip city club with a musical line-up that doesn't follow trends—it sets them.
- ▶ The theatre: intimate. The setting: elegant. The line-up: eclectic. The combination will make the **Keswick Theater** in Glenside one of your favorite spots for a night out.
- ▶ The **Kimmel Center** has your ticket to world-renowned entertainment: The Philadelphia Orchestra, Italian opera, Japanese kodo drumming, American jazz, Spanish guitar and more.
- ▶ It started out as a recording studio, so it figures that **Milkboy Coffee** in Ardmore would have the inside track on soon-to-hit-your-iPod indie artists and new musical acts.
- ▶ Dust off your dress-up threads and enjoy an evening of subtle, sophisticated and sultry performances during *Morgan's Cabaret* at Philadelphia's **Prince Music Theater**.
- ▶ Tuck into **Puck Live** in Doylestown and take your pick of two venues—an intimate performance space where professional acts take the stage or a hip, casual bar perfect for a relaxed evening.



KIMMEL CENTER

VALLEY FORGE

Montgomery County, Pa., where history loves company, is the site of the historic Valley Forge encampment of 1777-78—the turning point of the American Revolution.

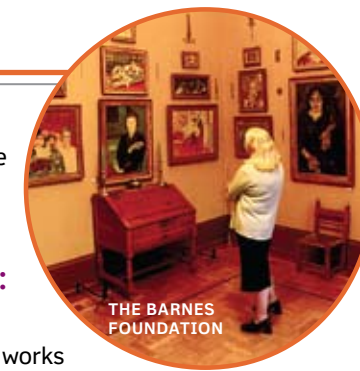
TODAY, THE AREA SHOWCASES:

- ▶ **The Barnes Foundation**, in Merion Station, houses a stunning 3,000-piece collection of works by Cézanne, Matisse and other French Impressionist, Post-Impressionist, American and African artists.
- ▶ Fashionistas can get runway ready at the **King of Prussia Mall**, a 400-store shopping mecca with dozens of international trendsetters, including Versace and Louis Vuitton. Those on a budget can find name brands on sale every day at **Philadelphia Premium Outlets**.
- ▶ Although 4,000 pieces of art can be viewed inside, it's the extensive collection of contemporary sculpture out at the **Berman Museum of Art** that is sure to catch your eye at this charming Collegeville campus.
- ▶ The minute you see the old-time marquis of the **Bryn Mawr Film Institute**, you know this isn't just another movie house. Inside the National Historic Landmark, you'll enjoy art films, first-run flicks and even simulcast Metropolitan Opera performances.
- ▶ If you're a food lover, the Ardmore Farmers' Market at **Suburban Square** is a dream come true. The fresh fruits, vegetables, prepared foods and pastries are sure to please every palate.
- ▶ Enjoy **First Fridays** in Ardmore, Haverford and Bryn Mawr (Montgomery County's Main Line) as you visit all three towns via trolley.
- ▶ The tree-lined **Ambler Main Street** features fine dining, award-winning live theater and alluring stores. Stroll the adorable, historic **Skippack Village** with more than 80 one-of-a-kind shops and boutiques housed in 18th- and 19th-century homes and buildings.
- ▶ Mandatory for adventurers is the newest rush of adrenaline in Montgomery County: zip lining at **Spring Mountain**.

For more information on Montgomery County, please check out valleyforge.org.



VALLEY FORGE NATIONAL HISTORICAL PARK



THE BARNES FOUNDATION

HISTORY LOVES COMPANY in Valley Forge, Pa.



Living History at Valley Forge National Historical Park

Main Streets and Quaint Villages

Seasonal Events

Exciting Nightlife
READER RESPONSE 11



888.VISIT VF
888.847.4883
www.valleyforge.org

BUCKS COUNTY

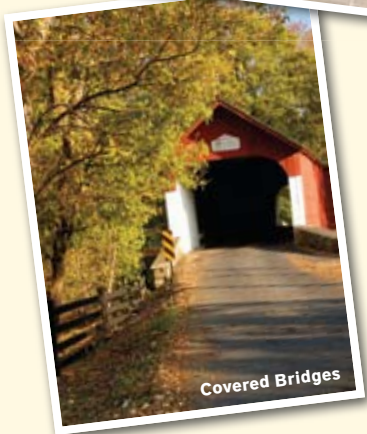
PENNSYLVANIA
FOLLOW YOUR HEART TO BUCKS



Peddler's Village



Sesame Place



Covered Bridges

VisitBucksCounty.com

READER RESPONSE 12



BUCKS COUNTY



BUCKS COUNTY RIVER COUNTRY

BUCKS COUNTY

Bucks County offers a peaceful respite for visitors escaping the hustle and bustle of everyday city life. Tucked neatly within Philadelphia's countryside amidst rolling hillsides, working farms and picturesque old-time towns, Bucks County is marked by a particularly inviting countryside. Whether you're taking a driving tour through our 12 historic covered bridges or sipping wine at one of our nine wineries, you'll experience why Bucks County was named one of the Top 29 Places to Visit in the World in 2009!

With a natural beauty withstanding the test of time, Bucks County has become synonymous with the arts, shopping, wineries, eclectic dining and ever inviting accommodations. Throughout your travels, you will run into distinctive and charming towns, such as Doylestown, where you can travel to architectural treasures like a six-story concrete castle housing over 40,000 artifacts of early America at the **Mercer Museum**. Or trek to Henry Mercer's home, **Fonthill Museum**, a concrete castle built in 1910 boasting 44 rooms and 18 fireplaces elaborately adorned with original hand-crafted tiles.

Head north to New Hope, the popular artist colony offering eclectic charm comfortably offset by casual sophistication. As one of Bucks County's premier hot spots, the streets hold over 200 art galleries, antique shops and boutiques and numerous restaurants that are pleasing the most discriminating palate. For a truly unique dining experience, enter **Marsha Brown Restaurant**, a 125-year-old stone church transformed into a refined Creole kitchen and lounge specializing in Marsha's native New Orleans cuisine.

Follow the winding brick pathway to a unique shopping experience. Visit **Peddler's Village**, a charming 18th-century-style shopping village with 70 unique specialty shops and six restaurants set on 42 acres of landscaped gardens.

For more information about Bucks County, please check out visitbuckscounty.com.

INDEPENDENCE VISITOR CENTER

Start at the Center! The **Independence Visitor Center** will help make the most of your visit to Philadelphia and The Countryside®. Open at 8:00 a.m., 362 days a year, **Independence Visitor Center** is the official visitor center to **Independence National Historical Park**, the City of Philadelphia and the surrounding counties of Bucks, Chester, Delaware and Montgomery, as well as the Southern New Jersey Delaware River waterfront. Located at 6th & Market Streets, across from the **Liberty Bell Center**, **Independence Visitor Center** is a one-stop-shop for all your travel needs. Gather information, buy tickets, make reservations, grab a snack and surf the Web—all from the comfort of the center. Remember, the **Independence Visitor Center** is the exclusive location to obtain tickets to **Independence Hall**.

On-site representatives from the National Park Service are available to tell you more about Philadelphia's historic sites. From where to go, what to see and how to get there, the multilingual concierge staff has you covered. With an incredible knowledge of Philadelphia and The Countryside®, these experts can help plan a trip that is sure to create memories that will last a lifetime!

With the user-friendly informational kiosks throughout the center, you can make reservations, book hotel accommodations or research the surrounding region. The kiosks can help visitors plan their trip from start to finish with the touch of a button. The **Independence Visitor Center** also offers more than 600,000 brochures from top attractions, restaurants and shopping districts in Philadelphia.

The newest way to explore Philadelphia is with the Historic Philadelphia GPS Ranger Tour, available only at the **Independence Visitor Center**. Visitors can rent personal GPS devices to lead them through 25 sites in **Independence National Historical Park**. Philly's own Ben Franklin leads the virtual tour.

Speaking of Ben, don't miss *Breakfast with Ben* every Saturday morning, from 9:00 to 10:30 a.m. Guests enjoy an interactive breakfast and discussion with one of our nation's most influential Founding Fathers.

For more information and to speak with a live concierge at the **Independence Visitor Center**, call 800-537-7676. Or check out IndependenceVisitorCenter.com. Start at the Center! The **Independence Visitor Center**.



INDEPENDENCE VISITOR CENTER

Photos by M. Kennedy, R. Kennedy, B. Krist, G. Widman and J. Smith for Greater Philadelphia Tourism Marketing Corporation; also courtesy of Chester County Conference & Visitors Bureau, Valley Forge Convention & Visitors Center, J. Holder and Bucks County Conference & Visitors Bureau and Independence Visitors Center Corp.

The best way to see Philly? Start at the Center.

Begin your trip to America's Birthplace at the Independence Visitor Center.

Located across from the Liberty Bell in the heart of Historic Philadelphia.

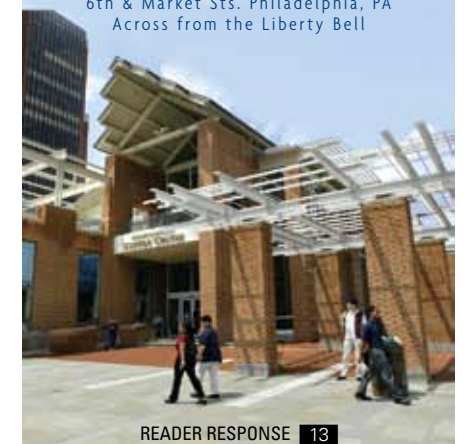
- Exclusive pick up point for FREE Independence Hall tickets
- Tickets for many other area attractions and tours
- Personalized trip planning assistance
- Expert multilingual concierge staff
- Free wireless internet access
- Indoor and Outdoor Café

Before you go out, stop in!

Independence
VISITOR CENTER

www.IndependenceVisitorCenter.com
800.537.7676 215.965.7676

6th & Market Sts. Philadelphia, PA
Across from the Liberty Bell



READER RESPONSE 13